



2020 Building and Production Specifications

**6161 Delmar Blvd
Saint Louis, MO 63112
(314) 726-6161**

GENERAL INFORMATION

CONTACT INFO

Venue Information

The Pageant
6161 Delmar Blvd
Saint Louis, MO 63112
Venue phone: (314) 726-6161
Venue fax: (314) 726-9696

Production Manager

Ken Brown (KB)
kb@thepageant.com

House Audio Contact

Randy Noldge
rnoldge@thepageant.com

House Lighting/Video Contact

Jason Grossmann
jgrossmann@thepageant.com

House Merch Contact

Ryan McHugh
rmchugh@thepageant.com

The Pageant is located in the University City / Delmar Loop area of Saint Louis, MO. **Due to local ordinances involving minors, there is a strict 11:45 curfew for all-ages shows.**

LOCAL HOTELS

Moonrise Hotel (2 doors away from venue)

6177 Delmar Blvd
Saint Louis, MO 63112
(314) 721-1111
Contact: Amy Moser, Sales Manager
Direct: (314) 685-3419
amy@moonrisehotel.com

Chase Park Plaza (2.5 miles away from venue)

212 N. Kingshighway Blvd
Saint Louis, MO 63108
(314) 633-3028

Drury Inn (3.5 miles away from venue)

111 Sulphur Avenue
Saint Louis, MO 63139
(314) 241-3200

Crowne Plaza Clayton (3 miles away from venue)

7750 Carondelet Avenue
Saint Louis, MO 63105
(314) 719-1127

GENERAL PRODUCTION SPECS

DRESSING ROOMS & CATERING

- (1) Downstairs: 13' x 15', no bathroom; located stage left adjacent to green room/catering
- (3) Upstairs: 13' x 13', 13' x 18', 14' x 20', two rooms have bathrooms and showers

There is a bathroom with a shower in the common area of the upstairs dressing rooms and a half bathroom on the stage left wing.

STAGE DIMENSIONS

- Deck: 40' wide x 30' deep
- Stage right: 16' wide x 32' deep
- Stage left: 15' wide x 25' deep (house monitor console and house)
- There is also a 4' wide cross-stage access lane behind the upstage drape.

RIGGING GRID

The grid is comprised of five foot square grid sections. It covers the entire stage and extends 13' downstage over the dance floor. There are also 10' x 10' extensions on both sides of the stage to accommodate audio points.

- Total grid capacity: 40,000 pounds
- Concentrated load capacity: 1,500 pounds per single point
- Grid height: 25' from stage, 30' from dance floor

STAGE POWER

- (1) 400 amp transformer - 3 phase 120v (lighting and rigging)
 - (1) 400 amp disconnect, stage right
 - (2) 100 amp disconnect, stage left
- (1) 200 amp transformer - 3 phase 120v (audio)
 - (1) 200 amp disconnect, stage left

All house production equipment is powered from these transformers.

AUDIO

FRONT OF HOUSE

FOH is located 38' from the downstage edge, just under lip of balcony. Sight/sound lines are unobstructed from this position. Cable troughs are located in front of walkways on both sides of the house between the stage and FOH for audio/lighting snakes. FOH dimensions: 24' wide x 12' deep.

FOH Audio

- (10) Vue Audiotechnik al-12 line array boxes per side
- (4) Vue Audiotechnik al-8 compact line array boxes per side as down fill
- (12) ElectroVoice XDS subs (located below the stage in a concrete enclosure)
- (2) Vue a-12 (balcony fills)
- (6) Vue a-12 (under-balcony fills)
- (2) Vue h-5 (front fills, ran passive w/V4 amp)
- Subs Powered with ElectroVoice P3000RL amplifiers
- Tops and fills powered with Vue V6 amplifiers

FOH Console and Processing

- Midas Heritage 1000: 42 mono / 4 stereo channel
- (1) Klark Teknik Helix DN 9340 digital equalizer
- (1) TC Electronics D-2 Delay
- (1) TC Electronics M-1 Reverb
- (1) Yamaha Rev-7
- (1) Yamaha SPX990
- (1) Sony CDP-D11 CD Player
- (4) BSS 402 dual channel compressor
- (8) DBX 1066 dual channel compressor/gate
- (3) Aphex 612 dual channel expander/gate
- (1) 54 channel RamLatch split and snake (non-isolated)

Telex communication is also installed in-house and is ClearComm compatible. The house power supply can also be disconnected to utilize house wiring as dry lines.

MONITOR WORLD

Monitors

- (15) Radian Apex Neo 1500XD bi-amped coaxial monitor wedges
- (2) ElectroVoice QRx 212/75 (2-12" x 2" sidefill tops)
- (3) ElectroVoice QRx 218 (2-18" sidefill/drum subs)
- Sidefills ran in full range, no separate sub send
- (12) channels of power, including cue and sidefills, powered with QSC EX4000 and MX1500 amplifiers. Sidefill subs powered by EV P3000

Monitor Console and Processing

- Midas Pro2
- (4) Ashly Protea 4.8SP for wedge and sidefill processing

MICROPHONES AND DIs

(subject to change without notice)

(12) Shure SM58	(2) Audio Technica 2020	(3) Sennheiser E609
(14) Shure SM57	(2) Audio Technica 2021	(11) Klark Teknik LBB100
(2) Shure Beta 52	(1) Rode NT3	direct boxes
(1) ElectroVoice RE200B	(2) Oktava MK-012-01	(6) Radial JDI direct boxes
(4) Audix D4	(5) Sennheiser 604	

Wireless:

- (1) Shure ULXD4Q wireless receiver, G50 band (470 - 534 MHz)
- (4) Shure ULXD2 handheld transmitters.
- (4) SM58 heads, (4) Heil PR35 heads.

*In addition, we are endorsed by **Heil Sound** and always have a rotating stock of these microphones. We also carry a small batch of new stock that is for sale. Feel free to demo any models we have available.

*We strictly use cabling from RapcoHorizon.

LIGHTING AND VIDEO

LIGHTING

- Martin M1 Lighting Console

Ground Lights

- (8) Chauvet SlimPar Pro RGBA
- (4) Chauvet Q-Wash 260 LED
- (12) Par 56 cans 300w
- (1) DF50 Hazer on a timer

***HAZERS, FOGGERS, AND OTHER SMOKE/PYRO:** If a fogger or more than one hazer is to be used, a fire marshal is **required** on site. **Arrangements MUST be made prior to the show date with the house production manager.** Single house DF50 on a timer must be used with no marshal present.

Grid (fixed locations)

- (6) Chauvet Maverick Mk1 Spot 6 (29 CH Mode)
- (8) Chauvet Q-Wash 260 LED (12 CH Mode)
- (36) Source Four Pars 575w (30 upstage, 6 downstage)
- (6) Source Four Junior Zooms 575w (downstage)
- (2) 3 cell crowd blinders (downstage)
- (2) Diversitronic 3600 Strobes (1 upstage, 1 downstage)

Downstage Truss

- (6) Chauvet Q-Wash 560z LED (15 CH Mode)

Miscellaneous

- (2) Lycian Zot 12 Spotlights 1200W

VIDEO

- (1) 12' x 16' front projection electric roll-down screen: fixed location on downstage side of main curtain line - maximum vertical drop is 4' above stage floor
- (1) 30' x 17' white projection surface
- (1) 13' x 17' rear projection truss frame screen (location is flexible): skirting kit includes a 3' or 6' bottom skirt and drapes to frame screen size 9' x 12' or 17' horizontal letterbox
- (1) Sanyo PLC XP200: 7000 lumen, located on downstage truss for front projection or backstage for rear projection With(Kanex Pro SDI to VGA converter box)
- (1) Datavideo SE-650 Digital Video Switcher
- (1) Kanex Pro SDI to HDMI Converter Box
- (1) Kanex Pro HDMI to SDI Converter Box
- (1) Sony consumer DVD player
- (1) Samsung consumer Blu-Ray Player
- (1) Dell Latitude E6430 Laptop With Installed software below..
- Vlc Player (Video playback)
- Libre Office 5.3 (Microsoft Office Powerpoint alternative)

DIGITAL INFORMATION SYSTEM

- (7) 42' Panasonic flat screen televisions: operated from one computer in the box office. This system does not provide audio with the screens.

MAPS & DIRECTIONS

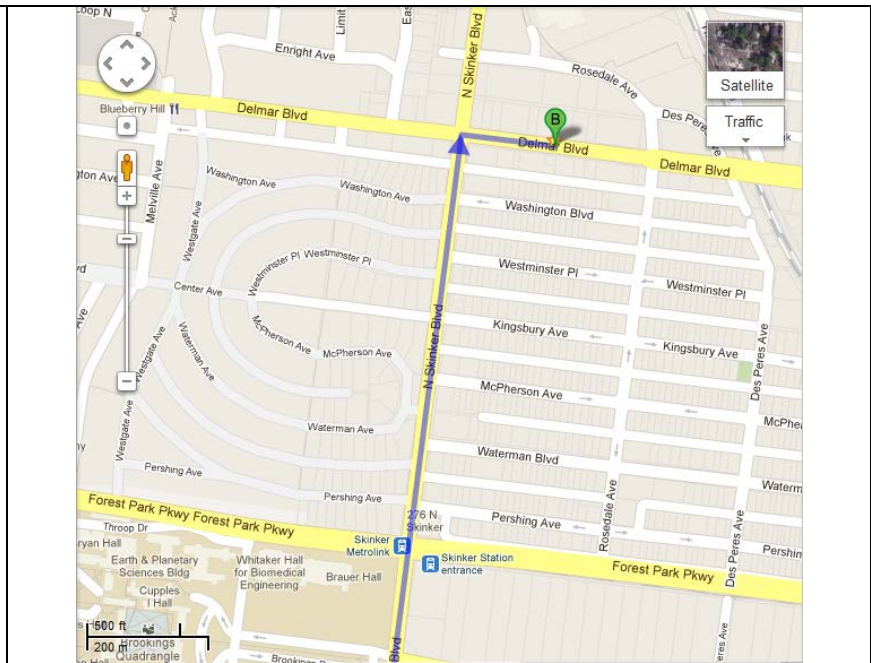
When travelling from the west:

1. Take I-64 / Hwy 40 East to exit 33D - McCausland Avenue.
2. Left onto McCausland Avenue north; this will turn into Skinker Blvd.
3. Turn right onto Delmar Blvd East.

When travelling from the east:

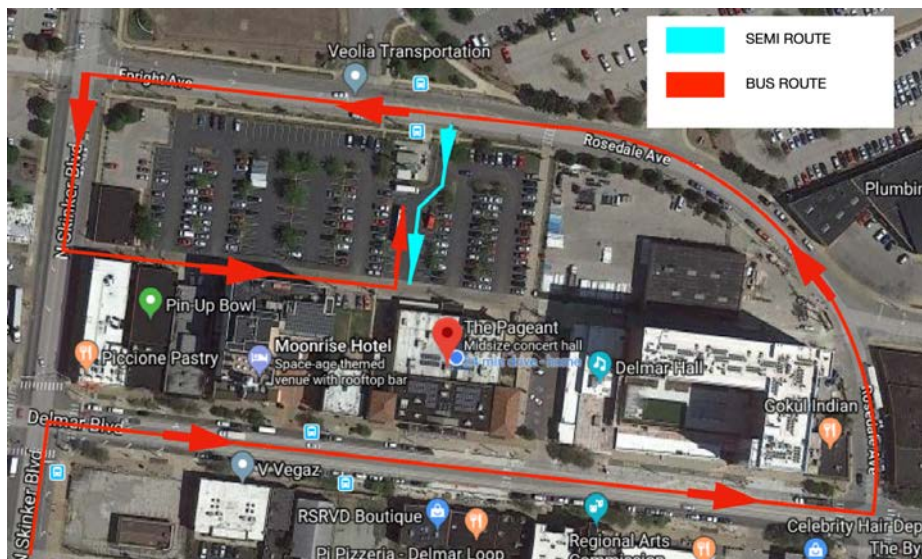
1. I-64 / Hwy 40 West
2. Take exit 33B Clayton Rd / Skinker Blvd North.
3. Turn right onto Skinker Blvd North for about 1.5 miles.
4. Turn right onto Delmar Blvd East.

The Pageant will be on the left (North) side of the road.

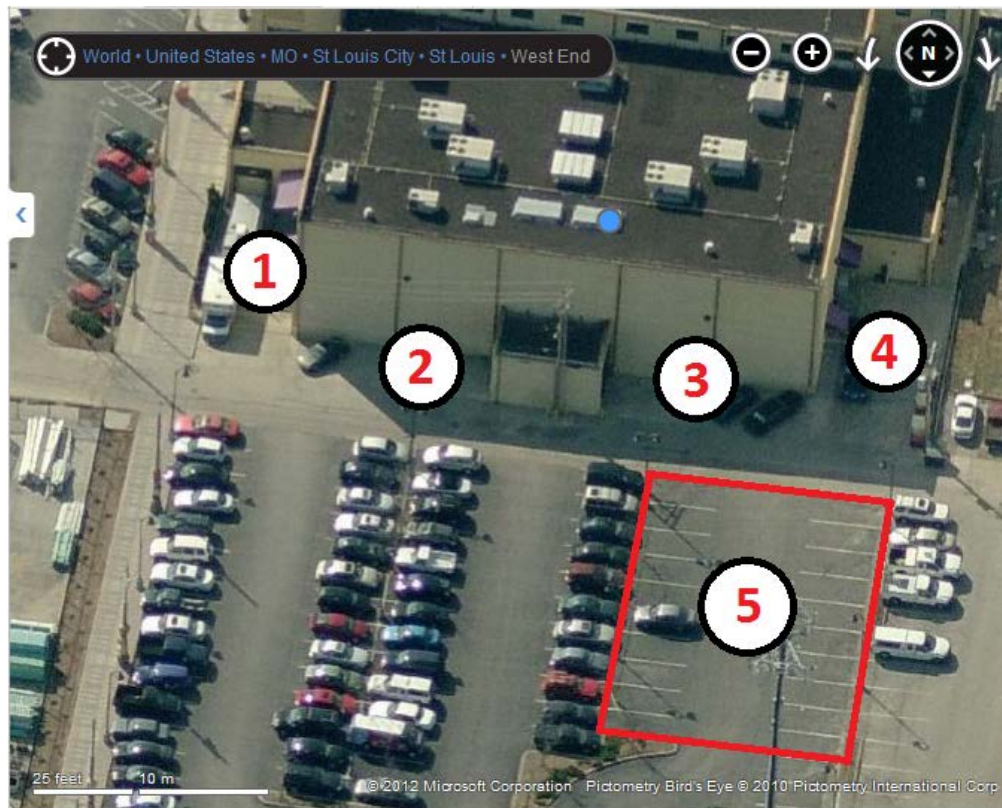


Additional directions for large vehicles:

1. Continue east on Delmar Blvd to Rosedale Avenue.
2. Turn left onto Rosedale Blvd North. This will turn into Enright.
3. SEMIS/BOX TRUCKS: Turn left into the Pageant/retail parking lot just after the stop sign and keep to the right. At the top of the lot are the loading docks.
4. TOUR BUSES: Continue to the light and turn left onto Skinker Blvd. Turn left into alley half a block down. Alley will lead to parking behind pageant.



LOAD-IN & PARKING



Pageant, Rear View

1: DOCK 1: Single roll up door to accommodate semi trailer (if necessary) - leads from storage/loading area directly into the venue main seating area.

2 & 3: DOCKS 2 & 3: Double roll-up doors to accommodate semi trailers. Dock storage/loading area is 15' x 27'. Dock height is standard semi trailer height. Two trucks can be accommodated simultaneously (one in each dock). Loading area leads directly onto the stage.

4: DOCK 4: Single roll up door, at ground level, leads from storage/loading area directly into the venue main seating area. *This dock will also accommodate star bus with no trailer.*

5: TOUR- AND CREW-ONLY PARKING LOT: Our parking lot contains a separate, chained-off area for tour parking. This area will comfortably accommodate three buses. When parking buses with trailers in the parking lot, please face trailers toward the building/dumpsters.

There are also single and double standard doors on both sides of the house and backstage for loading in.

SHORE POWER & WATER

Dock 4 and the parking lot are equipped with 220v single phase disconnects. Water connections are located in rear of building, near docks 2 & 3.