



# **2021 Building and Production Specifications**

**6161 Delmar Blvd  
Saint Louis, MO 63112  
(314) 726-6161**

# GENERAL INFORMATION

## CONTACT INFO

### Venue Information

The Pageant  
6161 Delmar Blvd  
Saint Louis, MO 63112  
Venue phone: (314) 726-6161  
Venue fax: (314) 726-9696

### Production Manager

Amandine Deligny  
[adeligny@thepageant.com](mailto:adeligny@thepageant.com)

### House Audio Contact

Randy Noldge  
[RNoldge@thepageant.com](mailto:RNoldge@thepageant.com)

### House Lighting/Video Contact

Gerry Dintelman  
[gdintelman@thepageant.com](mailto:gdintelman@thepageant.com)

### House Merch Contact

Ryan McHugh  
[rmchugh@thepageant.com](mailto:rmchugh@thepageant.com)

The Pageant is located in the University City / Delmar Loop area of Saint Louis, MO. **Due to local ordinances involving minors, there is a strict 11:45pm curfew for all-ages shows.**

## LOCAL HOTELS

### [Moonrise Hotel](#) (closest to the venue)

6177 Delmar Blvd  
Saint Louis, MO 63112  
(314) 721-1111  
Contact: Amy Moser, Sales Manager  
Direct: (314) 685-3419  
[amy@moonrisehotel.com](mailto:amy@moonrisehotel.com)

### [Chase Park Plaza](#) (2.5 miles away)

212 N. Kingshighway Blvd  
Saint Louis, MO 63108  
(314) 633-3000

### [Drury Inn](#) (3.5 miles away)

111 Sulphur Avenue  
Saint Louis, MO 63139  
(314) 646-0770

### [Clayton Plaza Hotel](#) (3 miles away)

7750 Carondelet Avenue  
Saint Louis, MO 63105  
(314) 726-5400

# GENERAL PRODUCTION SPECS

## DRESSING ROOMS & CATERING

- (1) Downstairs: 13' x 15', no bathroom; located stage left adjacent to green room/catering
- (3) Upstairs: 13' x 13', 13' x 18', 14' x 20', two rooms have bathrooms and showers

There is a bathroom with a shower in the common area of the upstairs dressing rooms and a half bathroom on the stage left wing.

## STAGE DIMENSIONS

- Deck: 40' wide x 30' deep
- Stage right: 16' wide x 32' deep
- Stage left: 15' wide x 25' deep (house monitor console and house)
- There is also a 4' wide cross-stage access lane behind the upstage drape.

## RIGGING GRID

The grid is comprised of five foot square grid sections. It covers the entire stage and extends 13' downstage over the dance floor. There are also 10' x 10' extensions on both sides of the stage to accommodate audio points.

- Total grid capacity: 40,000 pounds
- Concentrated load capacity: 1,500 pounds per single point
- Grid height: 25' from stage, 30' from dance floor

## STAGE POWER

- (1) 400 amp transformer - 3 phase 120v (lighting and rigging)
  - (1) 400 amp disconnect, stage right
  - (2) 100 amp disconnect, stage left
- (1) 200 amp transformer - 3 phase 120v (audio)
  - (1) 200 amp disconnect, stage left

All house production equipment is powered from these transformers.

# AUDIO

## FRONT OF HOUSE

FOH is located 45' from the downstage edge, just under lip of balcony. Sight/sound lines are unobstructed from this position. Cable troughs are located in front of walkways on both sides of the house between the stage and FOH for audio/lighting snakes.

FOH dimensions: 24' wide x 12' deep.

### FOH Audio

- (12) Vue Audiotechnik al-12 line array boxes per side
- (10) Vue hs-221 subs (located below the stage in a concrete enclosure)
- (4) Vue hs-221 subs (additional powered subs flanking stage - 2 per side)
- (2) Vue a-12 (balcony fills)
- (6) Vue a-12 (under-balcony fills)
- (2) EV Low Profile Lip Fills (front fills, ran passive w/ EV P1200 amp)
- Appropriate Vue amplification applied

### FOH Console and Processing

- Midas Heritage 1000: 42 mono / 4 stereo channel
- (1) Klark Teknik Helix DN 9340 digital equalizer
- (1) TC Electronics D-2 Delay
- (1) TC Electronics M-1 Reverb
- (1) Yamaha Rev-7
- (1) Yamaha SPX990
- (1) Sony CDP-D11 CD Player
- (4) BSS 402 dual channel compressor
- (8) DBX 1066 dual channel compressor/gate
- (3) Aphex 612 dual channel expander/gate
- (1) 54 channel RamLatch split and snake (non-isolated)

Telex communication is also installed in-house and is ClearComm compatible. The house power supply can also be disconnected to utilize house wiring as dry lines.

## MONITOR WORLD

### Monitors

- (15) Vue hm-115 bi-amped 15 inch wedges
- (2) Flown Vue al-8SB line array side fill sub (1 box per hang)
- (16) channels of power, including cue, and sidefills powered with Vue V4 and V6 amplifiers
- (2) Flown Vue al-8 line array side fill top (4 boxes per hang)
- (3) Vue hs-28 powered ground subs

### Monitor Console and Processing

- Midas Pro2
- Midas DL 251

## MICROPHONES AND DIs

(subject to change without notice)

(12) Shure SM58  
 (8) Shure SM57  
 (2) Shure Beta 52  
 (1) Shure Beta 91a  
 (4) Audix D2  
 (2) Heil PR 48  
 (5) Heil HM Pro  
 (7) Heil PR 28

(8) Heil PR 31  
 (6) Heil PR 40  
 (4) Heil PR 22  
 (6) Heil PR 35  
 (2) Audio Technica 2020  
 (2) Audio Technica 4040  
 (2) Shure SM 81  
 (2) Oktava MK-012-01

(5) Sennheiser 604  
 (3) Sennheiser E609  
 (3) Rapco Stereo DI boxes  
 (2) Rapco Mono DI boxes  
 (6) Radial JDI mono direct boxes

### Wireless

- (1) Shure ULXD4Q wireless receiver, G50 band (470 - 534 MHz)
- (4) Shure ULXD2 handheld transmitters.
- (2) SM58 heads, (4) Heil PR35 heads.

\*In addition, we are endorsed by **Heil Sound** and always have a rotating stock of these microphones. We also carry a small batch of new stock that is for sale. Feel free to demo any models we have available.

\*We strictly use cabling from RapcoHorizon.

# LIGHTING AND VIDEO

## LIGHTING

### Console

- Chamsys MQ500

### Grid (fixed locations above stage)

- (8) Chauvet Rogue R2X Wash (17ch.)
- (6) Chauvet Maverick MK1 Spot (29ch.)
- (3) Chauvet Q-Wash 560z (15ch.)
- (2) Chauvet Strike 4 (9ch.)
- (1) Diversitronic 3600 Strobe (2ch.)

### Downstage Truss (above pit)

- (8) Chauvet Rogue R2x Wash (17ch.)
- (6) Chauvet Maverick MK1 Spot (29ch.)

### Follow Spot

- (2) Lycian Zot 12 Spotlights (1200W CT-3250K Lamp)
- Must have IATSE Local 6 operating.

### Hazer

- (2) Chauvet Amhaze Eco (Must be used with no marshal present)

**\*HAZERS, FOGGERS, AND OTHER SMOKE/PYRO:** If a fogger or more than one hazer is to be used, a fire marshal is **required** on site. **Arrangements MUST be made prior to the show date with the house production manager.**

## **VIDEO**

- (1) EIKI EK-833DU WUXGA Large Class 1chip DLP Laser Projector located at front of house for front projection, 13,000 lumens – 1920x1200
- (1) 23.67' x 13.33' front projection electric roll-down screen (Da-Lite PROFESSIONAL 326D) - fixed location on downstage side of main curtain line - maximum vertical drop is 6.5' above stage floor
- (1) 30' x 17' white projection surface
- (1) 13' x 17' rear projection truss frame screen (location is flexible): skirting kit includes a 3' or 6' bottom skirt and drapes to frame screen size 9' x 12' or 17' horizontal letterbox
- (1) Datavideo SE-650 Digital Video Switcher
- (1) Kanex Pro SDI to HDMI Converter Box
- (1) Kanex Pro HDMI to SDI Converter Box
- (1) Sony consumer DVD player
- (1) Samsung consumer Blu-Ray Player

## **DIGITAL INFORMATION SYSTEM**

- (7) 42' Panasonic flat screen televisions: operated from one computer in the box office. This system does not provide audio with the screens.

# MAPS & DIRECTIONS

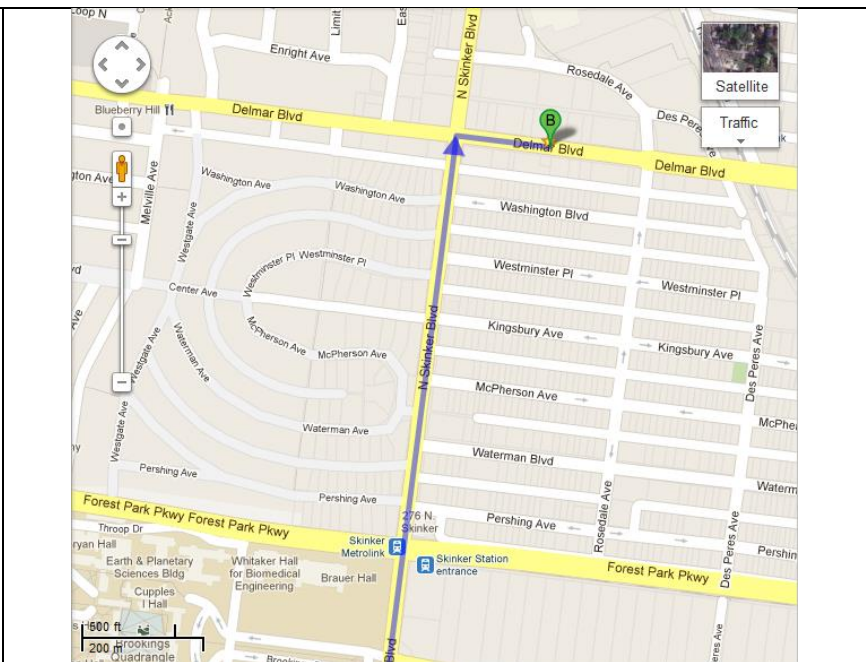
When travelling from the west:

1. Take I-64 / Hwy 40 East to exit 33D - McCausland Avenue.
2. Left onto McCausland Avenue north; this will turn into Skinker Blvd.
3. Turn right onto Delmar Blvd East.

When travelling from the east:

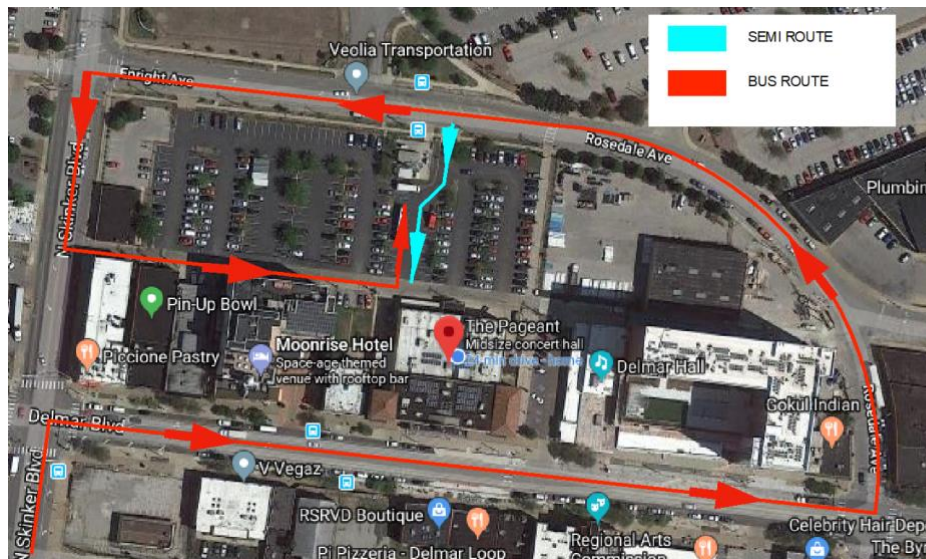
1. I-64 / Hwy 40 West
2. Take exit 33B Clayton Rd / Skinker Blvd North.
3. Turn right onto Skinker Blvd North for about 1.5 miles.
4. Turn right onto Delmar Blvd East.

The Pageant will be on the left (North) side of the road.



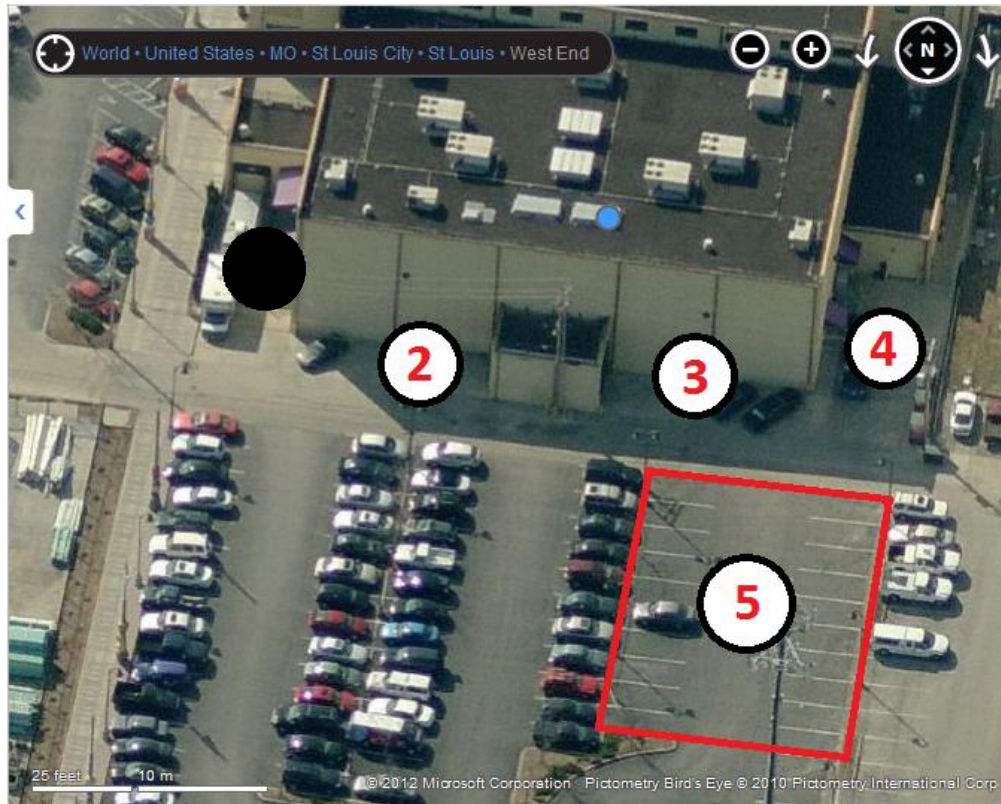
## Additional directions for large vehicles:

1. Continue east on Delmar Blvd to Rosedale Avenue.
2. Turn left onto Rosedale Blvd North. This will turn into Enright.
3. SEMIS/BOX TRUCKS: Turn left into the Pageant/retail parking lot just after the stop sign and keep to the right. At the top of the lot are the loading docks.
4. TOUR BUSES: Continue to the light and turn left onto Skinker Blvd. Turn left into alley half a block down. Alley will lead to parking behind pageant.





## LOAD-IN & PARKING



*Pageant, Rear View*

**2 & 3: DOCKS 2 & 3:** Double roll-up doors to accommodate semi trailers. Dock storage/loading area is 15' x 27'. Dock height is standard semi trailer height. Two trucks can be accommodated simultaneously (one in each dock). Loading area leads directly onto the stage.

**4: DOCK 4:** Single roll up door, at ground level, leads from storage/loading area directly into the venue main seating area. This dock will also accommodate one bus with no trailer.

**5: TOUR AND CREW PARKING LOT:** Our parking lot contains a separate, chained-off area for tour parking. This area will comfortably accommodate three buses. When parking buses with trailers in the parking lot, please face trailers toward the building/dumpsters.

There are also single and double standard doors on both sides of the house and backstage for load in.

## SHORE POWER & WATER

Dock 4 and the parking lot are equipped with 220v single phase disconnects. Water connections are located in rear of building, near docks 2 & 3.