



Building and Production Specifications

6161 Delmar Blvd
Saint Louis, MO 63112
(314) 726-6161
thepageant.com

GENERAL INFORMATION

VENUE CONTACTS

The Pageant

6161 Delmar Blvd
Saint Louis, MO 63112
Phone: (314) 726-6161

Production Manager

Amandine Deligny
adeligny@thepageant.com

Audio

Randy Noldge
RNoldge@thepageant.com

Lighting/Video

Gerry Dintelman
gdintelman@thepageant.com

Merch

Leslie Wolff
lwolff@thepageant.com

The Pageant is located in the University City / Delmar Loop area of Saint Louis, MO. **Due to local ordinances involving minors, there is a strict 11:45pm curfew for all-ages shows.**

LOCAL HOTELS

[Moonrise Hotel](#) (walking distance to venue)

6177 Delmar Blvd
Saint Louis, MO 63112
(314) 721-1111

For discounted rates, contact Amy Moser

Direct: (314) 685-3419
amy@moonrisehotel.com

[Chase Park Plaza](#) (2.5 miles away)

212 N. Kingshighway Blvd
Saint Louis, MO 63108
(314) 633-3000

[Drury Inn](#) (3.5 miles away)

111 Sulphur Avenue
Saint Louis, MO 63139
(314) 646-0770

[Clayton Plaza Hotel](#) (3 miles away)

7750 Carondelet Avenue
Saint Louis, MO 63105
(314) 726-5400

GENERAL PRODUCTION SPECS

DRESSING ROOMS & HOSPITALITY

Dressing rooms are located stage left; 3 are located upstairs, 1 is located downstairs. Touring and house production offices are located stage right. All dressing rooms and offices have direct stage access.

Upstairs:

- » (1) Headliner dressing room with private bathroom and shower – 14' x 20'
- » (1) Support dressing room with private bathroom and shower – 13' x 13'
- » (1) Crew dressing room, no bathroom – 13' x 18'
- » (1) Bathroom with shower in the common area

Downstairs:

- » (1) Dressing room, no bathroom – 13' x 15'
- » (1) Kitchen/break area – shared with house production crew
- » (1) Half bathroom on the stage left wing
- » (1) Touring production office
- » (2) Washers and dryers that can be used by artists and crew – house right and left

STAGE & LOAD IN

- » Load in via short ramp on stage right, directly to the stage
 - › Load in door: 40" wide x 82" tall
- » Semi load in via semi-height dock, straight push to the stage
 - › Stacking motor on the dock, 500lbs limit
- » Deck: 40' wide x 30' deep
- » Stage right: 16' wide x 32' deep
- » Stage left: 15' wide x 25' deep (house monitor console)
- » There is also a 4' wide cross-stage access lane behind the upstage drape.
- » Backdrop pipe: 35' wide, centered upstage

RIGGING GRID

The grid is comprised of five foot square grid sections. It covers the entire stage and extends 13' downstage over the dance floor. There are also 10' x 10' extensions on both sides of the stage to accommodate audio points.

- » Total grid capacity: 40,000 pounds
- » Concentrated load capacity: 1,500 pounds per single point
- » Grid height: 25' from stage, 30' from dance floor

Any rigging needs will require trusses and motors (from the tour or rented). Please discuss any rigging needs with the house production manager.

STAGE POWER

- » Audio
 - › (1) 200 amp transformer - 3 phase 120v
 - › 200 amp disconnect, stage left
- » Lighting and rigging
 - › (1) 400 amp transformer - 3 phase 120v
 - › (1) 400 amp disconnect, stage right
 - › (2) 100 amp disconnect, stage left
- » All house production equipment is powered from these transformers.

MERCHANDISE

- » House provides grids, tables, and lighting for merchandise displays.
- » Merchandise locations will be advanced directly by the house merch manager.
- » There are 2 main locations for merch:
 - › Suite 100 – our coffee shop
 - › House right and house left

AUDIO

FRONT OF HOUSE

FOH is located 45' from the downstage edge, just under lip of balcony. Sight/sound lines are unobstructed from this position. Cable troughs are located in front of walkways on both sides of the house between the stage and FOH for audio/lighting snakes (approx. 200ft distance).

FOH dimensions: 24' wide x 12' deep.

FOH Audio

- » (12) Vue Audiotechnik al-12 line array boxes per side
- » (10) Vue hs-221 subs (located below the stage in a concrete enclosure)
- » (4) Vue hs-221 subs (additional powered subs flanking stage - 2 per side)
- » (2) Vue a-12 (balcony fills)
- » (6) Vue a-12 (under-balcony fills)
- » (2) EV Low Profile Lip Fills (front fills, ran passive w/ EV P1200 amp)
- » Appropriate Vue amplification applied

FOH Console and Processing

- » Midas Heritage 1000: 42 mono / 4 stereo channel
- » (1) Klark Teknik Helix DN 9340 digital equalizer
- » (1) TC Electronics D-2 Delay
- » (1) TC Electronics M-1 Reverb
- » (1) Yamaha Rev-7
- » (1) Yamaha SPX990
- » (1) Sony CDP-D11 CD Player
- » (4) BSS 402 dual channel compressor
- » (8) DBX 1066 dual channel compressor/gate
- » (3) Aphex 612 dual channel expander/gate
- » (1) 54 channel RamLatch split and snake (non-isolated)

Telex communication is also installed in-house and is ClearComm compatible. The house power supply can also be disconnected to utilize house wiring as dry lines.

MONITOR WORLD

Monitors

- » (15) Vue hm-115 bi-amped 15 inch wedges
- » (2) Flown Vue al-8SB line array side fill sub (1 box per hang)
- » (16) channels of power, including cue, and sidefills powered with Vue V4 and V6 amplifiers
- » (2) Flown Vue al-8 line array side fill top (4 boxes per hang)
- » (3) Vue hs-28 powered ground subs

Monitor Console and Processing

- » Midas Pro2
- » Midas DL 251

MICROPHONES AND DIs

(subject to change without notice)

(12) Shure SM58	(8) Heil PR 31	(5) Sennheiser 604
(8) Shure SM57	(6) Heil PR 40	(3) Sennheiser E609
(2) Shure Beta 52	(4) Heil PR 22	(3) Rapco Stereo DI boxes
(1) Shure Beta 91a	(6) Heil PR 35	(2) Rapco Mono DI boxes
(4) Audix D2	(2) Audio Technica 2020	(6) Radial JDI mono direct boxes
(2) Heil PR 48	(2) Audio Technica 4040	
(5) Heil HM Pro	(2) Shure SM 81	
(7) Heil PR 28	(2) Oktava MK-012-01	

Wireless

- » (1) Shure ULXD4Q wireless receiver, G50 band (470 - 534 MHz)
- » (3) Shure ULXD2 handheld transmitters.
- » (2) SM58 heads, (3) Heil PR35 heads.

* In addition, we are endorsed by **Heil Sound** and always have a rotating stock of these microphones. We also carry a small batch of new stock that is for sale. Feel free to demo any models we have available.

* We strictly use cabling from RapcoHorizon.

LIGHTING AND VIDEO

LIGHTING

Console

- » Chamsys MQ500

Grid (fixed locations above stage)

- » (8) Chauvet Rogue R2X Wash (17ch.)
- » (6) Chauvet Maverick MK1 Spot (29ch.)
- » (3) Chauvet Rogue R2X Wash 17ch. (MS Aux Wash)
- » (2) Chauvet Strike 4 (9ch.)
- » (2) Diversitronic 3600 Strobe (2ch.)

Downstage Truss (above pit)

- » (8) Chauvet Rogue R2x Wash (17ch.)
- » (6) Chauvet Maverick MK1 Spot (29ch.)

Follow Spot

- » (2) Lycian Zot 12 Spotlights (1200W CT-3250K Lamp)
- » Must have IATSE Local 6 operating.

Hazer

- » (2) Chauvet Amhaze Eco (Must be used with no marshal present)

* **HAZERS, FOGGERS, AND OTHER SMOKE/PYRO:** If a fogger or a tour hazer is to be used, a fire marshal is **required** on site. Pyro requires permitting. **Arrangements MUST be made prior to the show date with the house production manager.**

VIDEO

- » (1) EIKI EK-833DU WUXGA Large Class 1chip DLP Laser Projector located at front of house for front projection, 13,000 lumens – 1920x1200
- » (1) 23.67' x 13.33' front projection electric roll-down screen (Da-Lite PROFESSIONAL 326D) - fixed location on downstage side of main curtain line - maximum vertical drop is 6.5' above stage floor
- » (1) 30' x 17' white projection surface
- » (1) 13' x 17' rear projection truss frame screen (location is flexible): skirting kit includes a 3' or 6' bottom skirt and drapes to frame screen size 9' x 12' or 17' horizontal letterbox
- » (1) Datavideo SE-650 Digital Video Switcher
- » (1) Kanex Pro SDI to HDMI Converter Box
- » (1) Kanex Pro HDMI to SDI Converter Box
- » (1) Sony consumer DVD player
- » (1) Samsung consumer Blu-Ray Player

DIGITAL INFORMATION SYSTEM

- » (7) 42" Panasonic flat screen televisions operated from one computer in the box office. This system does not provide audio with the screens.

PARKING & DIRECTIONS

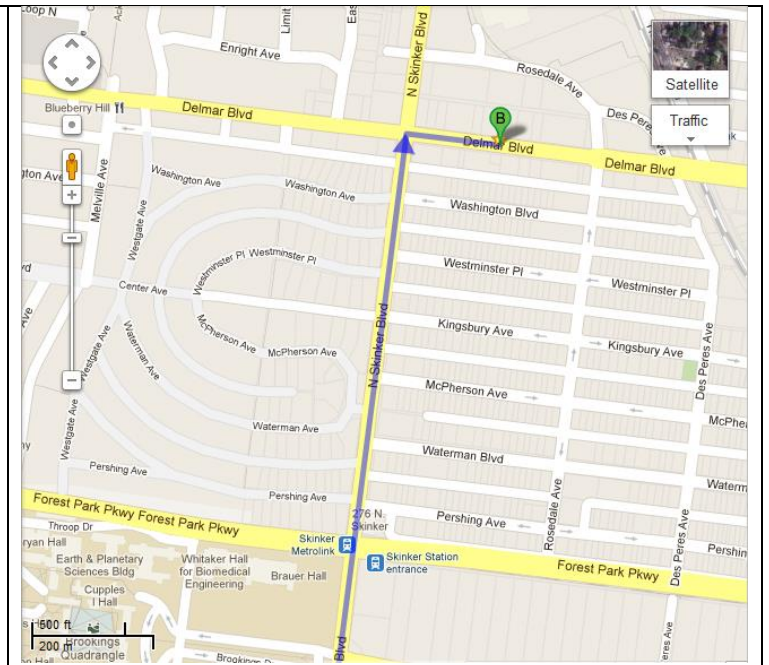
When travelling from the west:

1. Take I-64 / Hwy 40 East to exit 33C - McCausland Avenue.
2. Left onto McCausland Avenue north; this will turn into Skinker Blvd.
3. Turn right onto Delmar Blvd East.

When travelling from the east:

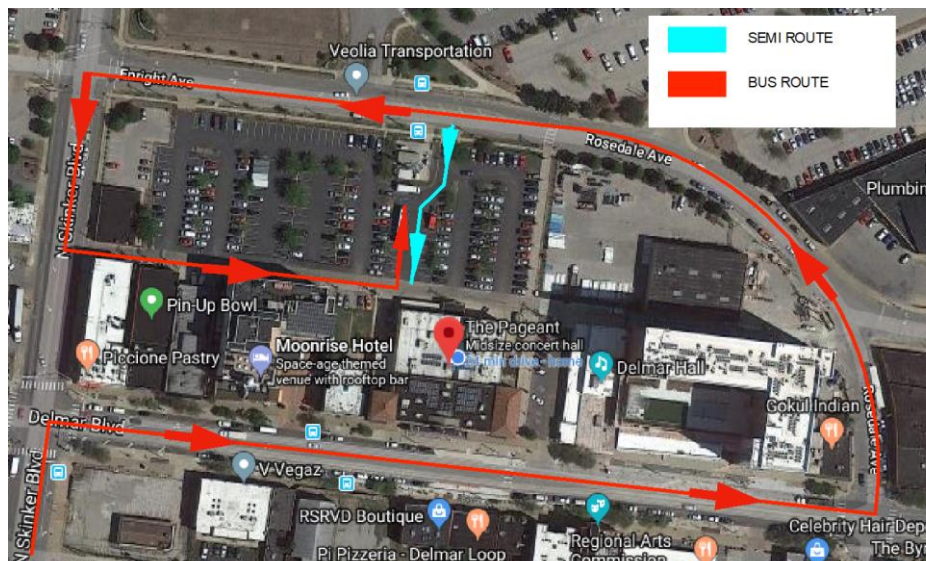
1. I-64 / Hwy 40 West
2. Take exit 34A Clayton Rd / Skinker Blvd North.
3. Turn right onto Skinker Blvd North for about 1.5 miles.
4. Turn right onto Delmar Blvd East.

The Pageant will be on the left (North) side of the road.

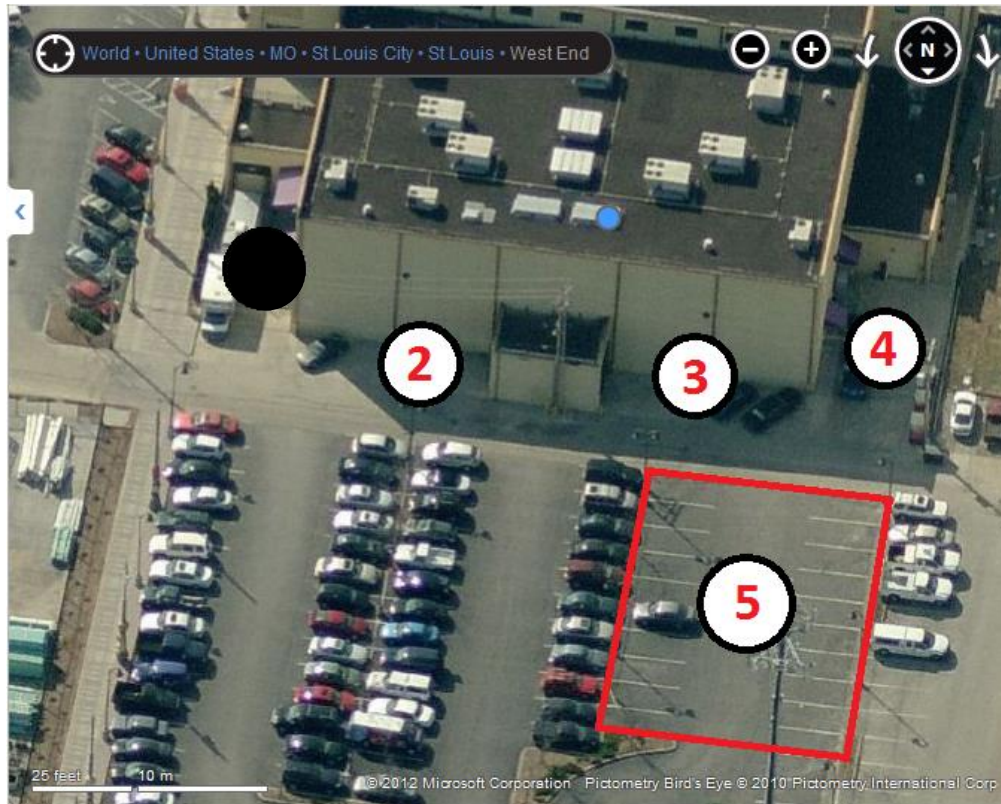


Additional directions for large vehicles:

1. Continue east on Delmar Blvd to Rosedale Avenue.
2. Turn left onto Rosedale Blvd North. This will turn into Enright.
3. SEMIS/BOX TRUCKS: Turn left into the Pageant/retail parking lot just after the stop sign and keep to the right. At the top of the lot are the loading docks.
4. TOUR BUSES: Continue to the light and turn left onto Skinker Blvd. Turn left into alley half a block down. Alley will lead to parking behind The Pageant.



LOAD-IN & PARKING



Pageant, Rear View

2 & 3: DOCKS 2 & 3: Double roll-up doors to accommodate semi trailers. Dock storage/loading area is 15' x 27'. Dock height is standard semi trailer height. Two trucks can be accommodated simultaneously (one in each dock). Loading area leads directly onto the stage.

4: DOCK 4: Single roll up door, at ground level, leads from storage/loading area directly into the venue main seating area. This dock will also accommodate one bus with no trailer.

5: TOUR AND CREW PARKING LOT: Our parking lot contains a separate, chained-off area for tour parking. This area will comfortably accommodate three buses. When parking buses with trailers in the parking lot, please face trailers toward the building/dumpsters.

There are also single and double standard doors on both sides of the house and backstage for load in.

SHORE POWER & WATER

Dock 4 and the parking lot are equipped with 220v single phase disconnects. Water connections are located in rear of building, near docks 2 & 3.