



# **Building and Production Specifications**

**6133 Delmar Blvd  
Saint Louis, MO 63112  
(314) 726-6161  
[thepageant.com](http://thepageant.com)**

Updated on 1/3/2024

# GENERAL INFORMATION

## VENUE CONTACTS

### Delmar Hall

6133 Delmar Blvd  
Saint Louis, MO, 63112  
Phone: (314) 726-6161

### Head of Production

Sean Pierce  
[SPierce@thepageant.com](mailto:SPierce@thepageant.com)

### Merchandise Manager

Leslie Wolff  
[LWolff@thepageant.com](mailto:LWolff@thepageant.com)

### Audio

Steve Zimmerman  
[SZimmerman@thepageant.com](mailto:SZimmerman@thepageant.com)

### Lighting/Video

Joel Blair  
[JBlair@thepageant.com](mailto:JBlair@thepageant.com)

## CURFEW

Delmar Hall is located in the University City / Delmar Loop area of Saint Louis, MO. **Due to local ordinances involving minors, there is a strict 11:45 PM curfew for all-ages shows.**

## LOCAL HOTELS

### [Moonrise Hotel](#) (walking distance to venue)

6177 Delmar Blvd  
Saint Louis, MO 63112  
(314) 721-1111

For discounted rates, contact Amy Moser

Direct: (314) 685-3419

[amy@moonrisehotel.com](mailto:amy@moonrisehotel.com)

### [Chase Park Plaza](#) (2.5 miles away)

212 N. Kingshighway Blvd  
Saint Louis, MO 63108  
(314) 633-3000

### [Drury Inn](#) (3.5 miles away)

111 Sulphur Avenue  
Saint Louis, MO 63139  
(314) 646-0770

### [Clayton Plaza Hotel](#) (3 miles away)

7750 Carondelet Avenue  
Saint Louis, MO 63105  
(314) 726-5400

# BACKSTAGE AND LOAD-IN

## DRESSING ROOMS & HOSPITALITY

Dressing rooms and touring and house production offices are located stage right, with direct access to the stage. Common areas (kitchenette and common area bathroom) are shared with house production crew.

- » (1) Headliner dressing room with private bathroom and shower – 12' x 8'
- » (1) Support dressing room, no bathroom – 11' x 7.5'
- » (1) Touring production office
- » (1) Crew/common area bathroom with shower
- » Kitchenette/crew break area located between production offices and headliner dressing room
- » (1) Washer and dryer in venue that can be used by artists and crew
- » Wireless internet available throughout building (no hard-wired internet)
- » No catering facilities available. There are over 20 restaurants within easy walking distance.

## STAGE & LOAD IN

- » Load in via short ramp on stage right, directly to the stage
  - > Load in door: 40" wide x 82" tall
- » Stage deck: 30' wide x 20' deep x 4' tall
- » Stage right wing: 6' wide x 20' deep
- » Stage left wing: 10' wide x 20' deep (house monitor world located stage left)
  - > Stage left is accessible during the show via a 4' wide access lane behind the upstage curtain
- » Height over stage: 16'
- » Fly bar (for backdrops only): 20' wide, centered upstage in front of the curtain
- » No rigging – there is no grid above the stage.

## STAGE POWER

- » **Audio**
  - > 200 amp transformer - 3 phase 120v
  - > 200 amp disconnect for touring power distros, upstage left – camlock in
- » **Lighting**
  - > 200 amp transformer - 3 phase 120v
  - > 200 amp disconnect for touring power distros, upstage left – camlock in

## MERCHANDISE

- » Merchandise area is 12' wide and located inside the performance room, near entrance/exit
- » This area is equipped with grids, tables, and lighting for merchandise displays

# AUDIO

## FRONT OF HOUSE

- » Located approximately 55 feet from downstage edge
- » Dimensions: 12' wide x 10' deep (shared with lighting)
- » Patrons are blocked from entering the FOH area by installed railings.

## FOH Console and I/O

- » Console: Allen & Heath dLive C3500
- » I/O: Allen & Heath DM48 (48 in / 24 out)
- » XTA MX36 three console switcher
- » Outputs: Left, Right, Mono Sub, Mono Front Fill
- » We are happy to build your session file in advance! Contact Steve Zimmerman (above) for details.

## FOH PA

### Vue Audiotechnik al-Series Line Array (<http://www.vue-audiotechnik.com>)

- » (8) al-8 compact line array boxes per side
- » (2) h-208 powered front fills, flown above the stage
- » (5) Vue Audiotechnik as-418 Quad 18' Isobaric Subwoofers, located underneath the stage
- » PA is powered by Vue Audiotechnik V-6i DSP-controlled amplifier

## MICROPHONE PACKAGE

Our microphone package is constantly evolving. Please advance if you need something specific that is not on this list.

- » DI Boxes
  - (4) Rapco DB-1 Passive Mono DIs
  - (4) Rapco DB-2 Passive Stereo DIs
- » Shure
  - (1) Beta 52A
  - (6) SM57
  - (9) SM58
- » Heil (<http://www.heilsound.com>)
  - (2) PR 48
  - (4) PR 22
  - (6) PR 28
  - (2) PR 40
  - (4) PR 30
  - (4) PR 31BW
  - (4) PR 35

## **MONITOR WORLD**

- » Located stage left
- » Dimensions: 10' wide x 20' deep

### **Monitor Console and I/O**

- » Console: Allen & Heath dLive C3500
- » I/O: Allen & Heath DM48 (48 in / 24 out)
- » We are happy to build your session file in advance! Contact Steve Zimmerman (above) for details.

### **Monitors**

#### Wedges

- » (12) Vue Audiotechnik hm-112 bi-amped Stage monitors
- » (1) Vue Audiotechnik h-12N Full Range powered monitor (drum fill)
- » (1) Vue Audiotechnik hs-225 15' Powered Subwoofer (drum sub)

#### Side fills

- » (4) Vue Audiotechnik al-8 compact line array boxes (2 boxes flown per side)
- » (2) Vue Audiotechnik as-418 Quad 18' Isobaric Subwoofers

#### Mix power

- » (10) mixes of power for hm-112 wedges
- » Side fill tops and subs are on separate dedicated amplifiers
- » Powered by Vue Audiotechnik V-6i and V-4i amplifiers

# LIGHTING

## LIGHTING INFORMATION

- » Located approximately 55 feet from downstage edge
- » Dimensions: 12' wide x 10' deep (shared with audio)
- » Patrons are blocked from entering the FOH area by installed railings.
- » Fly bar (for backdrops only): 20' wide, centered upstage in front of the curtain
- » No rigging – there is no grid above the stage.

### Console

- » Martin M2GO Lighting Console with 19" ELO Touchscreen Monitor

### Over Stage (dead hung/fixed locations)

- » (8) Chauvet Rogue 2 Washes
- » (6) Chauvet Rogue 2 Spots
- » (2) Chauvet Strike 4 Blinder / Strobe fixtures

### Downstage (dead hung/fixed locations)

- » (6) Chauvet Rogue 2 Washes

### Hazer

- » Chauvet Amhaze II Water-Based Hazer\*

**\*HAZERS, FOGGERS, AND OTHER SMOKE/PYRO:** Due to our fire suppression and HVAC systems conforming to newer building codes, you *must* use the house hazer, which is under the venue LD's control. This is not negotiable.

**\*CONFETTI, TOILET PAPER, ETC:** A clean up fee of \$250 may be assessed for confetti, toilet paper, and similar products. Please discuss specifics of your show and fee with venue PM.

# VIDEO

## VIDEO INFORMATION

### Projector

- » Projector: Epson PowerLite 2250U 5000 Lumen WUXGA 3LCD, fixed hang above dance floor for front projection
  - Projector input: HDMI
  - Projector input is located at FOH position.
  - Projector requires a computer or other media device with HDMI out and must be provided by artist or client – no in-house computer or other media player available.
  - **Artist or client must provide someone to operate visuals during event. There is no in-house staff available to run video or slideshows from client's computer.**

### Available Screens

- » 11' x 6' front projection electric roll-down screen: fixed location downstage
- » 19' x 10' white front projection surface; hung from fly bar at rear of stage

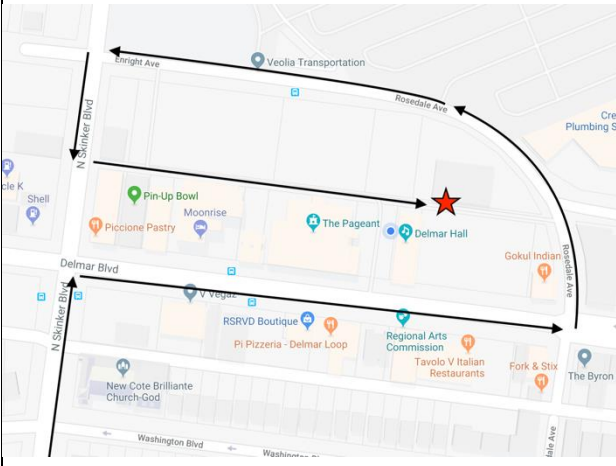
# PARKING & LOAD IN

## Our parking area is NOT the same as the lot for The Pageant. Tell your driver!

All parking arrangements will be determined by venue Production Manager.

There is space for up to two buses + trailers to park behind Delmar Hall, with one 220v single phase disconnect for shore power and one connection for water at the rear of the building. The adjacent parking lot contains a separate, chained-off area for tour- and crew-only parking for The Pageant. If necessary, additional vehicles will be directed to park in this area.

When parking behind the building, please park single buses to the right and vans/Sprinters to the left. Pull forward all the way to the gate, with rear trailer door facing west (toward The Pageant) for ease of load in. The load-in door with a ramp is located on the west side of the building (not the emergency exit door at rear of the building) and leads directly to the stage. See photos on next page.



The map displays the area around Delmar Hall and The Pageant. A red star marks the location of Delmar Hall. Arrows indicate the routes for travelers from the west and east. The west route starts on I-64/40 East to Exit 33D, turns left onto McCausland Avenue, and then turns right onto Skinker Blvd. The east route starts on I-64/40 West to Exit 33B, turns right onto Skinker Blvd North, and then turns right onto Delmar Blvd. Various local businesses and landmarks are labeled on the map, including Pin-Up Bowl, Piccione Pastry, Moonrise, The Pageant, Delmar Hall, Gokul Indian, RSRVD Boutique, Pizzeria - Delmar Loop, Regional Arts Commission, Tavolo V Italian Restaurants, Fork & Stir, The Byron, New Cote Brillante Church-God, and Veolia Transportation.

**When travelling from the west:**

- Take I-64/40 East to Exit 33D – McCausland Avenue.
- Turn left onto McCausland Avenue; this will turn into Skinker Blvd. (2.2 miles)

**When travelling from the east:**

- Take I-64/40 West to exit 33B – Clayton Rd / Skinker Blvd North
- Turn right onto Skinker Blvd North (1.5 miles)

From Skinker, turn right onto Delmar Blvd (heading east). Delmar Hall will be on the left side of the road, less than a block away.

## To parking for load in:

1. Continue east on Delmar Blvd to Rosedale Avenue.
2. Turn left onto Rosedale Blvd North. After a slight left, Rosedale will turn into Enright.
3. Continue to the light and turn left onto Skinker Blvd.
4. Turn left into alley halfway up the block.
5. Alley will lead to parking and loading ramp for Delmar Hall.
6. See photos on page 2 for specifics.



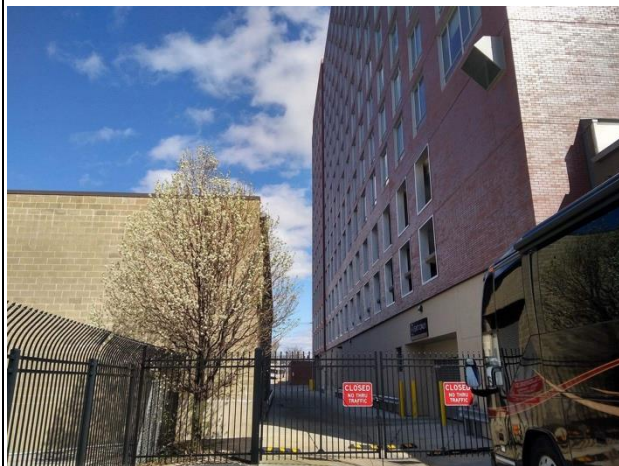
# PARKING & LOAD IN



Single bus parked at rear of building, with load in door pictured on the right.



Single buses park on the right, staying clear of the yellow lines.



Pull all the way forward to the gate!



Parking for second bus or van(s) to the left.